



Alterations of colonic sensitivity and gastric dysmotility after acute cisplatin and granisetron

Journal:	<i>Neurogastroenterology and Motility</i>
Manuscript ID	NMO-00305-2018.R1
Manuscript Type:	Original Article
Date Submitted by the Author:	n/a
Complete List of Authors:	Martín, Marta; Universidad Autónoma de Madrid, Biología Uranga, Jose; Universidad Rey Juan Carlos Facultad de Ciencias de la Salud, Ciencias Básicas de la Salud Mosinska, Paula; Medical University of Lodz, Department of Biochemistry Fichna, Jakub; Medical University of Lodz, Dept. of Biochemistry Nurgali, Kulmira; Victoria University, College of Health and Biomedicine Martín, M ^a Isabel; Universidad Rey Juan Carlos, Pharmacology and Nutrition Abalo, Raquel; Universidad Rey Juan Carlos, Pharmacology and Nutrition
Key Words:	cisplatin, granisetron, gastric dysmotility, emesis, visceral sensitivity

**Alterations of colonic sensitivity and gastric dysmotility after acute
cisplatin and granisetron**

Running title: Cisplatin alters colonic sensitivity

Marta Martín-Ruíz¹, José A. Uranga^{2,3,4}, Paula Mosinska⁵, Jakub Fichna⁵,
Kulmira Nurgali^{6,7,8}, M^a Isabel Martín-Fontelles^{2,3,4,9}, Raquel Abalo^{2,3,4,9}(a)

¹ *Departamento de Biología, Facultad de Ciencias, Universidad Autónoma de Madrid, Madrid 28049, Spain*

² *Departamento de Ciencias Básicas de la Salud, Facultad de Ciencias de la Salud, Universidad Rey Juan Carlos, Alcorcón, Madrid, Spain.*

³ *Unidad Asociada I+D+i al Instituto de Investigación en Ciencias de la Alimentación, CIAL (CSIC)*

⁴ *Grupo de Excelencia Investigadora URJC-Banco de Santander-Grupo Multidisciplinar de Investigación y Tratamiento del Dolor (i+DOL)*

⁵ *Department of Biochemistry, Faculty of Medicine, Medical University of Lodz, Mazowiecka 6/8, 92-215 Lodz, Poland*

⁶ *College of Health and Biomedicine, Institute for Health and Sport, Victoria University, Melbourne, Australia*

⁷ *Australian Institute for Musculoskeletal Science (AIMSS), Melbourne, Australia*

⁸ *Department of Medicine Western Health, The University of Melbourne, Australia*

⁹ *Unidad Asociada I+D+i al Instituto de Química Médica, IQM (CSIC)*

1
2
3 (a) Corresponding author
4
5

6 Departamento de Ciencias Básicas de la Salud
7

8 Facultad de Ciencias de la Salud
9

10 Universidad Rey Juan Carlos.
11

12 Avda. de Atenas s/n.
13

14 28922 Alcorcón, Madrid. Spain
15

16 Telf: +34 91 488 88 54
17

18 Email: raquel.abalo@urjc.es
19
20
21
22
23
24
25
26
27
28
29
30
31
32
33
34
35
36
37
38
39
40
41
42
43
44
45
46
47
48
49
50
51
52
53
54
55
56
57
58
59
60

For Peer Review

ABSTRACT

Background. Cisplatin is a highly emetogenic antineoplastic drug and induces peripheral neuropathy when given in cycles. Granisetron, a 5-HT₃ antagonist, is clinically used to prevent chemotherapy-induced nausea/emesis and abdominal pain in irritable bowel syndrome. The effects of cisplatin on visceral sensitivity and those of granisetron in the context of cancer chemotherapy are not well known.

Methods. Adult male Wistar rats received two intraperitoneal injections 30 min apart: granisetron (1 mg kg⁻¹)/vehicle, and cisplatin (6 mg kg⁻¹)/vehicle. Thereafter, nausea-like behavior was measured as bedding intake for 4 h, and gastric dysmotility was measured radiographically for 8 h. Gastric weight and size were determined *ex vivo* and samples of the forestomach, corpus, ileum and colon were obtained for histological analysis at 4 and 30 hours after cisplatin/vehicle. Visceral sensitivity was measured as abdominal contractions in response to mechanical intracolonic stimulation 2 h after cisplatin/vehicle.

Key results. Cisplatin induced bedding intake and gastric dysmotility, and granisetron blocked these effects, which occurred in the absence of frank mucositis. Visceral sensitivity was reduced to a similar extent by both drugs alone or in combination.

Conclusions & inferences. Cisplatin-induced bedding intake and gastric dysmotility were blocked by granisetron, confirming the involvement of serotonin acting on 5-HT₃ receptors. Unexpectedly, visceral sensitivity to colonic distension was reduced, to the same extent, by cisplatin, granisetron and their combination, suggesting important mechanistic differences with nausea and gastric dysmotility that warrant further investigation.

1
2
3 **KEYWORDS:** cisplatin; granisetron; pica; gastric dysmotility; emesis; visceral
4
5 sensitivity.
6
7
8
9
10
11
12
13
14
15
16
17
18
19
20
21
22
23
24
25
26
27
28
29
30
31
32
33
34
35
36
37
38
39
40
41
42
43
44
45
46
47
48
49
50
51
52
53
54
55
56
57
58
59
60

For Peer Review

KEY MESSAGES:

- Antitumoral drugs like cisplatin produce many adverse effects, including those affecting the gastrointestinal tract. Cisplatin is highly emetogenic and provokes neuropathic pain but its effects on colonic sensitivity are less known.
- In rats, acute cisplatin induced nausea-like behavior and decreased gastric motility. Both effects were prevented by the antiemetic drug granisetron. Cisplatin, granisetron or their combination decreased colonic sensitivity to the same extent.
- Cisplatin and granisetron effects on nausea/gastric motility and sensitivity to colonic distension must involve different mechanisms.

INTRODUCTION

Cancer chemotherapy is associated with the development of numerous and feared adverse effects that may compromise treatment (1). Adverse effects in the gastrointestinal tract include nausea and emesis, as well as diarrhea or constipation, depending on the particular drug (1-5). Cisplatin is a highly emetogenic antitumoral drug, often used as reference in experimental studies searching for new antiemetics (6, 7). Although other mechanisms may be involved, serotonin released from the enterochromaffin cells and acting upon vagal afferents through 5-HT₃ receptors, is one of the main components underlying nausea and emesis induced by cisplatin (8-11) and is probably also involved in the effect of other antitumoral drugs. Thus, 5-HT₃ antagonists are currently used in all moderate to severe emetogenic chemotherapy regimens as key antiemetics (12).

In experimental animals lacking the emetic reflex, like the rat, other markers of nausea/emesis are needed. Pica, the ingestion of non-nutritive substances, like kaolin (6,13,14), occurs in the rat both after a single dose of cisplatin (15), and after its repeated administration (cycles) (16-18). Another effect of antitumoral drugs, tightly related to nausea/emesis, and present in all vertebrate species, is gastric dysmotility. Thus, delayed gastric emptying and gastric distension have been reported to occur after cisplatin administration in the rat (15,18-22). Granisetron and other 5-HT₃ receptor antagonists are capable of preventing cisplatin-induced acute pica, measured as kaolin intake (20), and gastric dysmotility (21). Interestingly, it has been shown that bedding intake can be used, instead of kaolin intake, to evaluate pica induced by opiates in the rat

1
2
3 (23), but, as far as we know, the effect of cisplatin on bedding intake has not
4
5 been determined, nor the effect of 5-HT₃ antagonists on this.
6
7

8
9 Another well-known chemotherapy-induced adverse effect is neuropathic pain,
10 which affects limbs in a so-called “stocking and glove” manner (24). In contrast,
11 the occurrence of visceral pain related to chemotherapy has received less
12 attention. Unlike somatic pain, visceral pain is diffuse, difficult to localize,
13 irradiated to superficial structures and often accompanied by nausea, vomiting
14 and other manifestations (25). Among the 40% of the population experiencing
15 visceral pain, 28% corresponds to cancer patients, in whom pain may be
16 associated with metastasis or treatments (25). In this context, visceral pain may
17 be associated with the development of chemotherapy-induced mucositis (27)
18 and enteric neuropathy (28-31), frequent complications of these treatments.
19 However, visceral pain was recently demonstrated to occur in the rat shortly
20 after paclitaxel, another antineoplastic drug (32). Whether or not visceral pain
21 develops also immediately after cisplatin treatment is not clear, nor the effect of
22 5-HT₃ antiemetics used to prevent chemotherapy-induced gastric dysmotility,
23 nausea and emesis.
24
25
26
27
28
29
30
31
32
33
34
35
36
37
38
39
40
41
42
43

44 Therefore, our aim was to determine if visceral sensitivity is altered after acute
45 cisplatin administration, at a dose capable of inducing kaolin intake and gastric
46 dysmotility in the rat (15). We also investigated if this dose was able to induce
47 bedding intake and evaluated the effect of granisetron on the functional effects
48 and structural changes induced by cisplatin in the gut wall.
49
50
51
52
53
54
55
56
57
58
59
60

MATERIALS AND METHODS

The experiments were designed and performed in accordance with the European and Spanish legislation on care and use of experimental animals (EU Directive 2010/63/EU for animal experiments; R.D. 53/2013) and were approved by the Ethic Committee at Universidad Rey Juan Carlos (URJC). The animal protocol was designed to minimize pain or discomfort to the animals.

Animals

Male Wistar rats (290-370 g) were obtained from Charles River (studies on gastrointestinal motility, n=32) and from the Veterinary Unit at URJC (bedding intake studies, n=31; visceral sensitivity, n=25). Animals were group-housed (3-4/cage) in standard transparent cages (60 cm x 40 cm x 20 cm), under environmentally controlled conditions (temperature = 20°C; humidity = 60%), with a 12 h light/12 h dark cycle. Animals had free access to standard laboratory rat chow (Harlan Laboratories Inc.) and sterile tap water. The animals for the studies on gastrointestinal motility were acclimatized to laboratory conditions for two weeks prior to experimentation.

Drug treatments

In all cases, animals received 2 intraperitoneal (i.p.) injections, separated by 30 min: the first one was granisetron (1 mg kg⁻¹) or saline (0.5 ml); the second one was cisplatin (6 mg kg⁻¹) or saline (0.5 ml). Thus, treatment groups for the study were: saline+saline (S+S); saline+cisplatin (S+C6); granisetron+saline (Grani+S); granisetron+cisplatin (Grani+C6).

Bedding intake as an indirect index of nausea

After the second drug injection (saline or cisplatin), each rat was placed in an individual cage provided with wood shaving bedding, food and water, and was observed for 4 hours. The number of times the rat ingested bedding in its cage was recorded in periods of 1 hour by a blinded observer.

Analysis of gastrointestinal motor function

Two kinds of studies were performed to determine the effect of cisplatin and/or granisetron on gastrointestinal motor function: first, radiographic, non-invasive *in vivo* methods were used to determine alterations in general gastrointestinal transit (see below); second, the weight and size of the stomach were measured *ex vivo* to more accurately evaluate the alterations produced by the different drugs in gastric motor function. The *ex vivo* study was performed in two different groups of rats in order to evaluate two different time-points: 4 and 30 h after cisplatin administration; for ethical reasons, the rats studied at 4 h were the same used for the bedding intake study and those studied at 30 h were the same used for the radiographic analysis. All studies were followed by histological analysis (see below).

Radiographic techniques were applied as previously described (15). Thus, 20 min after the second drug injection, 2.5 ml of a suspension of barium sulphate (Barigraph ® AD, Juste SAQF, Madrid, Spain; 2g ml⁻¹, t°= 22°C) was administered *per os*. Intra-gastric gavage administration was carried out with conscious animals, using curved gavage needles appropriate for the animal size (14 gauge, 2.9 inch length, 4 mm ball diameter). Plain facial radiographs of

1
2
3 the gastrointestinal tract were obtained at different time-points (0-8h: T0-T8)
4 after administration of the contrast medium. A CS2100 (Carestream Dental,
5 Spain) digital X-ray apparatus (60 kV, 7 mA) was used, and X-rays were
6 recorded on Carestream Dental T-MAT G/RA film (15 x 30 cm) housed in a
7 cassette provided with regular intensifying screen. Exposure time was adjusted
8 to 20 ms and focus distance was manually fixed to 50 ± 1 cm. Immobilization of
9 the animals in prone position was achieved by placing them inside adjustable,
10 hand-made, transparent plastic tubes. Habituation to the recording chamber
11 prior to commencement of the study did not significantly alter GI motility (15). To
12 further reduce stress, animals were released immediately after each shot
13 (immobilization lasted for less than 2 min). A trained investigator blind to the
14 drug administered performed the analysis of the radiographs. Alterations in GI
15 motility were semiquantitatively determined from the images by assigning a
16 compounded value to each region of the GI tract considering the following
17 parameters: percentage of the GI region filled with contrast (0-4); intensity of
18 contrast (0-4); homogeneity of contrast (0-2); and sharpness of the GI region
19 profile (0-2). Each of these parameters was scored and a sum (0-12 points) was
20 made. In addition, the X-rays were scanned and the alterations in the size of
21 stomach and caecum were morphometrically analyzed with the aid of an image
22 analysis system (Image J 1.38 for Windows, National Institute of Health, USA,
23 free software: <http://rsb.info.nih.gov/ij/>).

24
25
26
27
28
29
30
31
32
33
34
35
36
37
38
39
40
41
42
43
44
45
46
47
48
49
50 For the *ex vivo* studies at 4 and 30 h after cisplatin, animals were killed by sharp
51 cervical dislocation and exsanguination, and different organs were removed.
52
53
54 For the study of gastric motor function, the stomach was weighed and
55
56
57
58
59
60

1
2
3 photographed. The photographs were used to analyze the size of the whole
4 stomach, corpus and forestomach using morphometric methods as described
5 for the X-rays.
6
7
8
9

10 **Colonic sensitivity**

11
12 Two hours after the second drug injection (cisplatin or saline), the rat was
13 sedated with Sedator® (medetomidine hydrochloride, an alpha-2 adrenergic
14 agonist, 1 ml kg⁻¹, 1 mg ml⁻¹, i.p.). Once sedated, a 10 cm longitudinal line was
15 drawn over the *linea alba* of the rat abdomen, from the penis cranially, and
16 shorter transverse lines were also drawn every 2 cm, to better visualize the
17 contractions during the recordings.
18
19
20
21
22
23
24
25
26
27

28
29 Next, fecal material was gently removed from the rectum and a 5 cm long latex
30 balloon lubricated with vaseline was inserted through the anus into the colon so
31 that the tip of the balloon was 7 cm inside the colorectum. The catheter to which
32 the balloon was connected was fixed to the tail of the rat with Parafilm®, so that
33 during the experiment it could not be expelled. Sedation was reverted with
34 Revertor® (atipamezole hydrochloride, an alpha-2 adrenergic antagonist, 0.66
35 ml kg⁻¹, 5 mg ml⁻¹, i.p.), and the rat was allowed to wake up in the recording
36 cage (it normally took less than 5 min for the rat to wake up and start exploring
37 the cage). After waking up, the rat behavior was recorded using a video camera
38 (iPad, Apple, Madrid, Spain) located 30 cm below the cage floor. The recording
39 lasted 40 minutes; the first 5 min were discarded (they were only used to
40 confirm the normal behavior of the rat after recovery from sedation); thereafter,
41 the pressure of the intracolonic balloon was increased, using a
42
43
44
45
46
47
48
49
50
51
52
53
54
55
56
57
58
59
60

1
2
3 sphygmomanometer, from 0 to 75 mm Hg, in steps of 15 mm Hg every 5
4
5 minutes, to finally return to 0 mm Hg again. Pressure was maintained in each 5
6
7 min-interval (tonic stimulation).
8
9

10
11 For the analysis of visceral sensitivity, the videos were exported as series of
12
13 frames (1 s^{-1}), using the Free Video to JPG Converter program (v.5.0.73). Each
14
15 frame was then analyzed to determine the number and duration of contractions,
16
17 as well as the % of time spent by the rat contracting the abdomen during each
18
19 5-min period. An abdominal contraction was considered as a depression of the
20
21 abdomen where transverse lines approached one another.
22
23

24 25 26 **Histopathological analysis of gastrointestinal regions**

27
28 Samples were obtained from the stomach (forestomach and corpus), terminal
29
30 ileum (at least 10 cm oral to the ileocaecal junction) and distal colon, fixed in
31
32 buffered 10% formalin and embedded in paraffin. Sections of 5 μm were stained
33
34 with conventional hematoxylin-eosin (HE). They were studied under a Zeiss
35
36 Axioskop 2 microscope. The analysis was made in 5-8 random fields per
37
38 sample measured in 20-40x objective microphotographs with a total of three
39
40 slices analyzed per specimen. The experimenter was blind to the treatment
41
42 received by the rat from which the sample under analysis was obtained.
43
44
45
46

47
48 Histological damage of the ileum was evaluated in sections stained with HE
49
50 using criteria adapted from Galeazzi et al. (33). A numerical score of 0–9 was
51
52 assigned to each section considering general loss of mucosal architecture
53
54 (graded 0–3, absent to severe), extent of inflammatory cell infiltrate (graded 0–
55
56
57
58
59
60

1
2
3 3, absent to transmural), crypt abscess formation (0–1, absent or present),
4 goblet cell depletion (0–1, absent or present) and muscular layer thickness (0–
5 1, normal to reduced).
6
7
8
9

10
11 The colon was evaluated according to Saccani et al. (34). The numerical score
12 in this case was 0–13 considering epithelial damage (0–3, normal to severe),
13 infiltration of inflammatory cells (0–4, absence to severe involving submucosa),
14 separation of muscle layer and *muscularis mucosae* (0–2, normal to severe) and
15 goblet cell depletion (0–4, absent to present).
16
17
18
19
20
21
22
23

24 **Compounds and drugs**

25
26 Barium sulphate (Barigraf® AD, Juste SAQF, Madrid, Spain) was suspended in
27 tap water and continuously hand-stirred until administration.
28
29
30

31
32
33 Granisetron hydrochloride (1-methyl-N-(9-methyl-endo-9-azabicyclo[3.3.1]non-
34 3-yl-1H-indazole-3-carboxamide monohydrochloride) was obtained from Ascent
35 Scientific (Bristol, UK) and dissolved in saline. Cisplatin (*cis*-diammineplatinum
36 (II) dichloride) was purchased from Sigma-Aldrich (Spain) and dissolved in
37 saline (sonicated for about 15 min).
38
39
40
41
42
43
44
45

46 **Statistical analysis**

47
48 Data are presented as the mean values \pm SEM (standard error of the mean).
49
50 Differences between groups were analyzed using unpaired Student's t-test, with
51 Welch's correction where appropriate, or one-way or two-way ANOVA followed
52
53
54
55
56
57
58
59
60

1
2
3 by *post-hoc* Bonferroni multiple comparison test. Values of $p < 0.05$ were
4
5 regarded as being statistically different.

6 7 **RESULTS**

8 9 **Bedding intake**

10
11 In control (S+S) rats, some bedding intake was observed during the first hour of
12
13 the study, but this decreased in the remaining observation periods and was not
14
15 present at all during the third and the fourth hours (Fig. 1). Bedding intake in
16
17 animals treated with granisetron only (Grani+S) was similar to that of control
18
19 animals all along the 4 hours of the study. In animals treated with cisplatin only
20
21 (S+C6) bedding intake was always higher than in control animals and the
22
23 difference was statistically significant during the second hour after cisplatin
24
25 administration. Granisetron administered prior to cisplatin was able to prevent
26
27 the increase in bedding intake induced by the antineoplastic drug, particularly
28
29 during the first 2 hours (at this time-point, the difference with S+C6 group was
30
31 highly significant, but not significant with S+S group), although it overlapped
32
33 with that of S+C6 animals during the third and fourth hours after cisplatin (Fig.
34
35 1).
36
37
38
39
40

41 42 **Radiographic study of general gastrointestinal motility**

43
44 Gastric emptying in control (S+S) animals was progressive until 4 hours after
45
46 contrast. At this time-point very little barium remained in the stomach and it
47
48 decreased even further until the end of the study (Fig. 2A). Granisetron alone
49
50 (Grani+S) slightly accelerated the motility curve for this organ at T1 and T2 but
51
52 the effect was significant only at T2. Cisplatin alone significantly delayed gastric
53
54 emptying from T2 to T8 and a great amount of barium could still be seen in the
55
56
57
58
59
60

1
2
3 stomach of S+C6 animals at T8. Administration of granisetron (Grani+C6) prior
4 to cisplatin was able to prevent the effect of cisplatin, and even accelerated
5 gastric emptying at T1, although the motility curve turned to be parallel to that
6 for the S+C6 group afterwards and was not statistically different from S+S group
7 for the remaining time-points.
8
9
10
11
12
13
14

15 Small intestinal transit curve in control animals (S+S) showed a typical filling
16 phase from T0 to T1, a plateau from T1 to T2, and an emptying phase from T2
17 to T8. The curve for animals treated with granisetron only (Grani+S) showed a
18 similar profile, although the emptying phase tended to be slightly slower and
19 this effect was statistically significant at T4. In the motility curve for the small
20 intestine of animals treated with cisplatin only (S+C6), which was similar to that
21 in control animals, the plateau was lower. Once again, granisetron was able to
22 prevent the effects of cisplatin on small intestinal transit and the curve reached
23 a plateau similar to that in control animals, but the emptying phase was slightly
24 but significantly slower than those obtained for S+S and S+C6 animals at T4
25 (Fig. 2B).
26
27
28
29
30
31
32
33
34
35
36
37
38
39
40

41 The transit curve for the caecum in control animals showed a typical profile in
42 which barium started to fill the organ at T2 and the maximum contents in this
43 organ were reached at T4-T6. Granisetron slightly delayed filling of caecum.
44 The difference in contents with those of S+S animals was significant at T4,
45 although the values obtained for T6 and T8 were similar. The transit curve in
46 S+C6 animals was not different from that in control animals, although the
47 maximum values in T4-T8 were to some extent lower than the corresponding
48
49
50
51
52
53
54
55
56
57
58
59
60

1
2
3 ones in S+S rats. Granisetron delayed filling of caecum even further in animals
4
5 treated also with cisplatin, although contents at T8 were practically the same as
6
7 in S+S and S+C6 (Fig. 2C).
8
9

10
11 In control animals (S+S), barium started to be observed in the colorectal fecal
12
13 pellets at T4 and reached the maximum at T8. In animals treated with
14
15 granisetron only (Grani+S), barium was seen in the fecal pellets from T6. In
16
17 cisplatin-treated animals (S+C6), some filling of colorectum was seen at T4, but
18
19 the maximum contents at T8 tended to be lower than in control animals.
20
21 Granisetron prevented the effects of cisplatin and the transit curves for
22
23 Grani+C6 animals tended to be similar again to that of control (S+S) animals
24
25 (Fig. 2D). In any case, differences were not statistically significant among the
26
27 different treatment groups in this region.
28
29
30
31
32

33 The morphometric study of the stomach and caecum showed similar results to
34
35 the semiquantitative analysis. Thus, the stomach size (area of the stomach
36
37 stained with barium) decreased progressively from T0 to T8 in S+S and
38
39 Grani+S animals. However, in cisplatin-treated animals (S+C6), there was an
40
41 initial increase in gastric size from T0 to T1 which stayed enlarged at the
42
43 following time points. In Grani+C6 animals, gastric size did not increase from T0
44
45 to T1, slightly decreased from T0 to T6, and decreased more sharply from T6 to
46
47 T8; although control values at T6 and T8 were not reached, the difference with
48
49 S+C6 animals was significant (Fig. 2E, G).
50
51
52
53
54
55
56
57
58
59
60

1
2
3 Regarding the caecum, the curve showing the changes in its size (area stained
4 by barium) for control animals (S+S) was very similar to that obtained in the
5 semiquantitative analysis. However, the curves obtained for the other three
6 treatment groups were displaced to the right to a similar extent (the difference
7 with control animals being statistically significant for S+C6 and Grani+S at T4)
8 and similar sizes were reached at T6-T8 for all groups (Fig. 2F, H).

17 **Ex vivo analysis of stomach weight and size**

19 Compared to control animals (S+S), cisplatin induced an increase in stomach
20 weight 4 hours after administration. This was accompanied by an increase in
21 stomach size, which was mainly due to an increase in forestomach size (Fig.
22 3A-C), but not the gastric corpus (data not shown). Granisetron (Grani+S) alone
23 did not significantly alter any of these parameters compared to S+S animals
24 (data not shown), whereas it tended to reduce the effect of cisplatin in all
25 parameters, but the difference reached statistical significance only for stomach
26 weight. Fig. 3D shows representative images of this study.

27
28
29
30
31
32
33
34
35
36
37
38
39 The results obtained 30 h after cisplatin were similar to those obtained 4 h **after,**
40 **when the antineoplastic drug was given alone.** However, weight, size of the
41 whole stomach and size of the forestomach tended to increase **(not decrease)**
42 in Grani+C6 compared to S+C6 (Fig. 3A'-D').

49 **Colonic sensitivity**

50
51 Abdominal contractions in response to increasing intracolonic pressure *in vivo*
52 were analyzed as a measure of visceral sensitivity. The results of this
53
54
55
56
57
58
59
60

1
2
3 experiment are shown in Figure 4. Control rats showed a progressive increase
4
5 in the number of contractions and % of time with abdominal contractions
6
7 (visceral pain response), as the mechanical stimulus increased, and when the
8
9 pressure was brought back to zero, no further contractions occurred (Fig 4A, C).
10
11 The duration of contractions was similar regardless of the pressure capable of
12
13 producing them (15-75 mm Hg) (Fig 4B).
14
15

16
17
18 In rats treated with cisplatin (S+C6), granisetron (Grani+S) or both (Grani+C6),
19
20 there was also a progressive increase in the number of abdominal contractions
21
22 with increasing mechanical stimulation, but the area under the curve tended to
23
24 be lower than in control rats (Fig 4A). The duration of contractions was similar in
25
26 all groups in response to increasing pressure (Fig 4B). Regarding the % of time
27
28 with abdominal contractions, compared to control rats (S+S), the animals
29
30 treated with only cisplatin (S+C6) showed values significantly lower at 45, 60
31
32 and 75 mm Hg and those treated with granisetron plus cisplatin (Grani+C6) at
33
34 60 and 75 mm Hg (Fig 4C).
35
36
37
38

39 **Histopathological analysis of gastrointestinal regions**

40
41 The histological pattern in HE stained sections of the stomach did not
42
43 demonstrate any relevant change 4 h after cisplatin treatment compared to
44
45 control rats. Granisetron did not have any effect and did not alter histology in
46
47 cisplatin-treated rats either (data not shown).
48
49
50

51
52 As shown in Fig. 5 (A-D), at this time-point, ileal samples from cisplatin-treated
53
54 rats were slightly but significantly damaged when compared to controls. Ileum
55
56
57
58
59
60

1
2
3 sections from rats treated with granisetron alone (not shown) or together with
4
5 cisplatin, scored lower but not significantly different to the sections of the ileum
6
7 from cisplatin-treated animals and controls. Scores higher than controls in this
8
9 experiment were mainly due to the presence of inflammatory infiltrates in the
10
11 mucosa. Regarding the colon (Fig. 5A'-D'), treatment with cisplatin caused an
12
13 increase in the number and extension of inflammatory infiltrates. The addition of
14
15 granisetron relieved the effect caused by cisplatin but not significantly.
16
17
18
19

20 At 30 h after cisplatin, some structural damage was observed in the
21
22 forestomach and at the apical area of the corpus glands after cisplatin treatment
23
24 and granisetron did not relieve this (Fig 6). Also, exposure to cisplatin was to
25
26 some extent detrimental to ileal architecture (Fig. 7B, D): some villi appeared
27
28 damaged and a clear increase in immune cell infiltrations was seen.
29
30 Granisetron (Fig. 7C, D) did not evoke any improvement in these parameters.
31
32 Finally, no significant effect of cisplatin, alone or combined with granisetron,
33
34 was observed in colonic samples (Fig. 7A'-D').
35
36
37
38

39 DISCUSSION

40
41 Here we examined the effects of the antineoplastic drug cisplatin and the 5-HT₃
42
43 receptor antagonist granisetron, alone or combined, on gastrointestinal motility
44
45 and colonic sensitivity in the rat. Cisplatin was used at a dose known to induce
46
47 pica (a surrogate marker of nausea in non-vomiting species (6,13-18)) and
48
49 gastric dysmotility (15). Here, both effects were seen: pica, as bedding intake
50
51 (23); and gastric dysmotility, as reduced gastric emptying and gastric distension
52
53 in both X-rays and *ex vivo*. This dose of cisplatin induced only minor histological
54
55
56
57
58
59
60

1
2 alterations of the gut wall and not frank mucositis at the time-points evaluated.
3
4 Granisetron, which is able to prevent kaolin intake (35), prevented also bedding
5 intake and gastric dysmotility occurring shortly (up to 4 h) after cisplatin
6 administration. In contrast, both drugs, alone or combined, reduced to a similar
7 extent the number of the abdominal contractions produced in the rat in
8 response to mechanical stimulation of the colon.
9
10
11
12
13
14
15
16
17

18 Cisplatin is a highly emetogenic drug (36) and often used in the search for new
19 antiemetics (7). In rodents, which are the most commonly used laboratory
20 animals, indirect markers of nausea/vomiting need to be used because they
21 lack the motor limb of the emetic reflex. In rats, these indirect markers include
22 paired taste avoidance (37), gaping (38), changes in facial expression (39) and
23 pica (13, 23). Pica has been shown to be induced after both single (14, 15) and
24 repeated administration of cisplatin (16-18). Pica, measured here as bedding
25 intake, was particularly intense 1-2 hours after cisplatin, and granisetron was
26 able to reduce this behavior which is consistent with previously reported block
27 of cisplatin-induced kaolin intake (35, 40). Thus, bedding intake recording
28 provides an easy, non-sophisticated and non-stressful method (the absence of
29 bedding in the cage, often removed in kaolin intake experiments, is stressful for
30 rodents) to evaluate the immediate effect of emetogenic stimuli like opiates (23)
31 and cisplatin (present report), and it might prove useful to evaluate other
32 emetogenic stimuli like rotation (41) or abdominal radiation (43).
33
34
35
36
37
38
39
40
41
42
43
44
45
46
47
48
49
50
51

52 Emetogenic stimuli also induce gastric dysmotility. This has been used as an
53 indirect marker of nausea in rodents (20,21,43) but occurs likewise in non-
54
55
56
57
58
59
60

1
2
3 rodent species (44,45). Similar to previous reports (15,20,21,46), our study
4 demonstrated that cisplatin at 6 mg kg^{-1} reduced gastric emptying and produced
5 gastric distension, mainly due to the distension of the forestomach. Gastric
6 dysmotility associated to this high dose of cisplatin was observed as soon as 20
7 min after administration (21) and lasted for at least 3 days (15).
8
9
10
11
12
13
14

15 Granisetron blocked cisplatin-induced bedding intake and gastric dysmotility,
16 mainly during the first two hours after administration. Immediately after
17 administration, cisplatin induces the massive release of serotonin from the
18 enterochromaffin cells (10,47) and this effect directly accounts for gastric
19 dysmotility (48). The serotonin receptors involved in this immediate effect of
20 cisplatin, located on vagal afferents innervating the upper gastrointestinal tract,
21 are mainly of the 5-HT_3 type, and thus granisetron and other antiemetics
22 sharing the same mechanism of action are useful to prevent this effect, facilitate
23 gastric emptying and block gastric (forestomach) distension (21).
24
25
26
27
28
29
30
31
32
33
34
35
36

37 Granisetron did not prevent gastric dysmotility at 30 h after cisplatin. The
38 relatively short-lasting gastroprokinetic effect of granisetron seen here is
39 probably mainly due to its short half-life (in rats, only 0.7 h after iv administration
40 (49,50)). However, it is important to note that, at a later stage after cisplatin
41 administration, other mechanisms of action take place (44,51), including the
42 release of other neurotransmitters (like substance P) and even pro-inflammatory
43 mediators, thus making 5-HT_3 antagonists less efficacious to control delayed
44 emesis (52), delayed pica (35) and delayed gastric dysmotility (20), even when
45 repeated administration or extended-release formulations are used (53).
46
47
48
49
50
51
52
53
54
55
56
57
58
59
60

1
2
3 Furthermore, upon cyclic use of cisplatin, 5-HT₃ antagonists may lose efficacy
4 (21,54). These facts justify the search for new antiemetics (4,7).
5
6
7

8
9 Even though we used a high dose of cisplatin with profound effects on gastric
10 motility, and despite the fact that serotonin released from the enterochromaffin
11 cells may contribute itself to triggering intestinal inflammation (55), very little
12 structural damage was found at 4 and 30 h after treatment, and this was mainly
13 associated with an increased occurrence of lymphoid nodules in the intestinal
14 regions, particularly in the ileum. Damage was found in the forestomach and at
15 the apical part of some glands in the *corpus* only 30 h after cisplatin
16 administration, suggesting that, at that time-point (but not at T4), cisplatin had
17 already triggered apoptosis and inhibition of cell proliferation in this tissue (56,
18 57). Ileum was more consistently sensitive to cisplatin, but damage scores
19 obtained in both ileum and colon, although significant in some cases, were
20 relatively low. Thus, cisplatin-induced immediate gastric dysmotility might be
21 related to the presence of some early inflammatory reactions (mainly lymphoid
22 nodule activation), occurring as soon as 4 hours after cisplatin administration,
23 but not to the presence of frank mucositis, which may need more time to
24 develop (28). Although granisetron blocked cisplatin-induced early gastric
25 dysmotility (and bedding intake), it did not clearly protect against nor clearly
26 increased any of these damaging effects of cisplatin on the gut wall, suggesting
27 that they might be due to serotonin-independent mechanisms.
28
29
30
31
32
33
34
35
36
37
38
39
40
41
42
43
44
45
46
47
48
49
50

51
52 In contrast to somatic neuropathy, not much is known about the effects of
53 cancer chemotherapy on visceral sensitivity, particularly in experimental
54
55
56
57
58
59
60

1
2
3 animals. In a recent study (32), paclitaxel intraperitoneally administered dose-
4 dependently induced visceral pain in the rat up to 100 min after administration.
5
6 The presence of writhing responses was used as a marker of spontaneous
7 visceral pain. Writhing responses were not observed in our bedding intake
8
9 experiments (lasting for 4 hours after cisplatin), suggesting that, in contrast to
10
11 paclitaxel, intraperitoneal cisplatin does not induce immediate spontaneous
12
13 abdominal pain.
14
15
16
17
18
19

20 Thus, we evaluated the effects of cisplatin on abdominal pain in response to
21
22 colonic mechanical stimulation. In all groups of animals, the number of
23
24 abdominal contractions increased in a pressure-dependent manner.
25
26 Importantly, abdominal contractions had a fairly homogeneous duration of 1.3-
27
28 1.7 s, suggesting that abdominal muscle motor function itself was not altered by
29
30 treatments. However, animals treated with cisplatin, granisetron, or both
31
32 showed a lower response (significant for % of time with abdominal contractions)
33
34 than control (S+S) animals, suggesting that both drugs inhibited colonic
35
36 sensitivity to mechanical stimulation. Interestingly, in rats subjected to colonic
37
38 mechanical stimulation, cisplatin and granisetron effects on gastric weight and
39
40 size were maintained (data obtained *ex vivo* after the visceral pain experiment,
41
42 not shown).
43
44
45
46
47

48 Cisplatin alone did not increase but inhibited colonic sensitivity to mechanical
49
50 stimulation. Although time-points after cisplatin administration for visceral pain
51
52 assessment and histology were not exactly the same (studies were performed
53
54 2.5-3.5 h and 4 h after cisplatin, respectively), it could be speculated that the
55
56
57
58
59
60

1
2
3 increased lymphoid nodules found in cisplatin-treated animals, in the absence
4
5 of frank mucositis, have an anti-inflammatory (and not a pro-inflammatory) role
6
7 in the few hours after administration. However, in a previous report (58), acute
8
9 intraduodenally applied serotonin attenuated the visceromotor response to
10
11 colorectal distension, in a manner sensitive to both granisetron and the
12
13 cannabinoid receptor 1 (CB1) antagonist AM251. It was suggested that
14
15 serotonin activated vagal 5-HT₃ receptors in the duodenum, leading to the
16
17 duodenal release of anandamide which reduced pain through activation of CB1
18
19 receptors. Interestingly, activation of CB1 receptors suppresses gastric
20
21 emptying and intestinal transit (59), and inactivation of CB1 receptors with
22
23 AM251 improved gastric dysmotility induced by vincristine (60) and cisplatin
24
25 (data not shown). Therefore, although other mechanisms cannot be discarded,
26
27 serotonin-induced anandamide release and activation of CB1 receptors might
28
29 reduce visceral pain (and induce gastric dysmotility) in the few hours after
30
31 cisplatin.
32
33
34
35
36

37 Granisetron alone tended to reduce abdominal contractions in response to tonic
38
39 mechanical stimulation, particularly at the high pressures used. Furthermore, in
40
41 animals treated with both granisetron and cisplatin, gastric dysmotility was
42
43 corrected, but inhibition of visceral pain was maintained (and filling of caecum
44
45 was even further delayed). In these animals, a different mechanism, other than
46
47 duodenal serotonin release and vagal 5-HT₃ receptors activation, must be
48
49 involved in visceral pain inhibition. Recently, 5-HT₃ receptors were
50
51 demonstrated to be involved in abdominal pain transmission within the
52
53 ventrolateral medulla, occurring in response to noxious colorectal distension
54
55
56
57
58
59
60

1
2
3 (61). Although the origin of serotonin released in those experiments was not
4 determined, in conditions of colonic hypersensitization, like irritable bowel
5 syndrome (IBS), serotonin may be released from intestinal mast cells,
6 contributing to abdominal pain (62). This underlies the analgesic effect of 5-HT₃
7 antagonists in IBS, with increased intestinal transit time (also seen here) and
8 constipation as their main adverse effects (63), and might also be involved in
9 granisetron effects (alone or combined with cisplatin) on colonic sensitivity.
10
11
12
13
14
15
16
17
18
19

20 In conclusion, cisplatin (at a dose able to induce gastric dysmotility) and
21 granisetron (at a dose able to counteract cisplatin-induced gastric dysmotility
22 and nausea-like behavior), alone or combined, were able to reduce colonic
23 sensitivity to tonic mechanical stimulation, suggesting important mechanistic
24 differences with nausea and gastric dysmotility that warrant further
25 investigation.
26
27
28
29
30
31
32
33
34
35
36
37
38
39
40
41
42
43
44
45
46
47
48
49
50
51
52
53
54
55
56
57
58
59
60

CONFLICT OF INTEREST

The authors declare that the research was conducted in the absence of any commercial or financial relationships that could be construed as a potential conflict of interest.

AUTHOR CONTRIBUTIONS

RA designed the study. MMR and PM performed the experiments. MMR analyzed the data. MMR, JAU and RA wrote the manuscript. MIMF contributed financial support. MIMF, KN and JF contributed essential intellectual input. All authors reviewed and approved the final version of the manuscript.

ACKNOWLEDGEMENTS

The authors are grateful to Laura Núñez, Maica Merino and Lorena Blanco for technical assistance in collecting functional data, and to Raquel Franco, Julio Paredes and Antonio Márquez, for histological processing of tissues.

FUNDING

Ministerio de Ciencia e Innovación (SAF2012-40075-C02-01). L. Blanco had a contract by Consejería de Educación, Juventud y Deporte from Comunidad de Madrid and Fondo Social Europeo (PEJ15/BIO/TL-0580).

FIGURE LEGENDS

Figure 1. Effect of acute administration of granisetron and/or cisplatin on bedding intake after drug administration. Animals received two intraperitoneal (i.p.) administrations 30 min apart. The first one was granisetron (Grani, 1 mg kg⁻¹) or saline (S, 1 ml kg⁻¹). The second one was S or cisplatin (6 mg kg⁻¹, C6). Animals were placed into individual cages, provided with food, water and wood shaving bedding. Acute bedding intake (indirect index of nausea) was recorded as the number of times each rat ate the bedding in its cage every hour for 4 hours. Values represent mean ± SEM (n=6-7 all groups). ****p*<0.001 vs S+S; ###*p*<0.001 vs S+C6.

Figure 2. Effect of cisplatin and/or granisetron on general gastrointestinal motor function and on size of stomach and caecum in the rat. General gastrointestinal transit was assessed using radiographic methods in: A. Stomach (gastric emptying); B. Small intestine; C. Caecum; D. Colorectum. Animals received two intraperitoneal (i.p.) administrations 30 min apart. The first one was saline (S, 1 ml kg⁻¹) or granisetron (Grani, 1 mg kg⁻¹). The second one was S or cisplatin (6 mg kg⁻¹, C6). Barium sulphate (2.5 ml, 2 g ml⁻¹) was gavaged after cisplatin or saline. The size of stomach (E) and caecum (F) was evaluated using Image J (see text for details). Values represent mean ± SEM (n=8, all groups). **p*<0.05, ***p*<0.01, ****p*<0.001 vs S+S; #*p*<0.05, ###*p*<0.001 vs S+C6. Two-way ANOVA followed by Bonferroni *post-hoc* test. G and H show representative images of animals treated with S+S, Grani+S, S+C6 or Grani+C6 (left to right, respectively), 4 (G) and 8 (H) h after contrast administration. Scale bar: 3 cm.

1
2
3 **Figure 3.** Effect of acute administration of granisetron and/or cisplatin on
4 stomach weight, whole stomach size and forestomach size in the rat. Animals
5 received two intraperitoneal (i.p.) administrations 30 min apart. The first one
6 was saline (S, 1 ml kg⁻¹) or granisetron (Grani, 1 mg kg⁻¹). The second one was
7 of S or cisplatin (6 mg kg⁻¹, C6). Stomachs were obtained 4 (upper panel) or 30
8 h (lower panel) later for measurement of weight and size. Size was measured
9 using Image J (see text for details). A, A': Stomach weight. B, B': Whole
10 stomach size (area). C, C': Forestomach size (area). D, D': Representative
11 images of stomachs from animals treated with S+S (a, a'), S+C6 (b, b'),
12 Grani+C6 (c, c'). Values represent mean ± SEM (n=8, all groups). **p*<0.05,
13 ***p*<0.01, ****p*<0.001 vs S+S; #*p*<0.05 vs S+C6. One-way ANOVA followed by
14 Bonferroni *post-hoc* test. Ruler: in cm.
15
16
17
18
19
20
21
22
23
24
25
26
27
28
29
30

31 **Figure 4.** Effect of acute administration of granisetron and/ or cisplatin on
32 abdominal contractions in response to mechanical intracolonic stimulation in the
33 rat. Animals received two intraperitoneal (i.p.) administrations 30 min apart. The
34 first one was granisetron (Grani, 1 mg kg⁻¹) or saline (S, 1 ml kg⁻¹). The second
35 one was S or cisplatin (6 mg kg⁻¹, C6). A balloon was inserted into the colon of
36 the rat, and was connected to a sphygmomanometer, through which pressure
37 was increased in steps of 15 mm Hg every 5 minutes, 2 hours after the
38 administration of the drugs. A. Number of abdominal contractions; B. Duration
39 of abdominal contractions; C. Percentage of time with abdominal contractions.
40 Values represent mean ± SEM (n=6-7 each group). **p*<0.05, ***p*<0.01, vs S+S.
41 Two-way ANOVA followed by Bonferroni *post-hoc* test.
42
43
44
45
46
47
48
49
50
51
52
53
54
55
56
57
58
59
60

1
2
3 **Figure 5.** Effect of acute administration of granisetron and/or cisplatin on
4 histological appearance of gut wall 4 h after cisplatin administration in the rat.
5
6 Animals received two intraperitoneal (i.p.) administrations 30 min apart. The first
7 one was granisetron (Grani, 1 mg kg⁻¹), or saline (S, 1 ml kg⁻¹). The second one
8 was S or cisplatin (6 mg kg⁻¹, C6). Samples were obtained 4 h later for
9 conventional histological analysis. Representative images of sections stained
10 with hematoxylin-eosin (HE) from ileum (upper panel, A-C, scale bar: 200 μm)
11 and colon (lower panel, A'-C', scale bar: 400 μm) are shown. Results of the
12 semiquantitative analysis of the histological sections are shown in D (ileum) and
13 D' (colon). A, A' (and white bar in D, D'): control animals treated with S+S. B, B'
14 (and red bar in D, D'): animals treated with S+C6. C, C' (and blue bar in D, D'):
15 animals treated with Grani+C6. Dotted horizontal lines in D and D' represent
16 maximum values for histological damage in each tissue. Values represent mean
17 ± SEM (n=8, all groups). **p*<0.05, ***p*<0.01 vs S+S. One-way ANOVA followed
18 by Bonferroni *post-hoc* test. Scale bar: 200 (ileum) and 400 μm (colon). Arrows
19 indicate inflammatory nodules.
20
21
22
23
24
25
26
27
28
29
30
31
32
33
34
35
36
37
38
39

40 **Figure 6.** Effect of acute administration of granisetron and/or cisplatin on
41 histological appearance of stomach wall 30 h after cisplatin administration in the
42 rat. Animals received two intraperitoneal (i.p.) administrations 30 min apart. The
43 first one was saline (S, 1 ml kg⁻¹) or granisetron (Grani, 1 mg kg⁻¹). The second
44 one was S or cisplatin (6 mg kg⁻¹, C6). Samples were obtained 30 h later for
45 conventional histological analysis. Representative images of sections stained
46 with hematoxylin-eosin (H-E) from the corpus (upper panel, A-C, scale bar: 400
47 μm) and forestomach (lower panel, A'-C', scale bar: 400 μm) are shown.
48
49
50
51
52
53
54
55
56
57
58
59
60

1
2
3 Control animals treated with S+S: A, A'. Animals treated with S+C6: B, B'.
4
5 Animals treated with Grani+C6: C, C'. Scale bar: 200 and 400 μm (corpus and
6
7 forestomach, respectively).
8
9

10
11 **Figure 7.** Effect of acute administration of granisetron and/or cisplatin on
12 histological appearance of gut wall 30 h after cisplatin administration in the rat.
13
14 Animals received two intraperitoneal (i.p.) administrations 30 min apart. The first
15
16 one was of granisetron (Grani, 1 mg kg⁻¹), or saline (S, 1 ml kg⁻¹). The second
17
18 one was S or cisplatin (6 mg kg⁻¹, C6). Samples were obtained 30 h later for
19
20 conventional histological analysis. Representative images of sections stained
21
22 with hematoxylin-eosin (HE) from the ileum (upper panel, A-C) and colon (lower
23
24 panel, A'-C') are shown. Results of the semiquantitative analysis of the
25
26 histological sections are shown in D (ileum) and D' (colon). A, A' (and white bar
27
28 in D, D'): control animals treated with S+S. B, B' (and red bar in D, D'): animals
29
30 treated with S+C6. C, C' (and blue bar in D, D'): animals treated with Grani+C6.
31
32 Dotted lines in D and D' represent maximum values for histological damage in
33
34 each tissue. Values represent mean \pm SEM (n=8, all groups). * p <0.05, ** p <0.01
35
36 vs S+S. One-way ANOVA followed by Bonferroni *post-hoc* test. Scale bar: 400
37
38 μm . Arrows indicate inflammatory nodules.
39
40
41
42
43
44
45
46
47
48
49
50
51
52
53
54
55
56
57
58
59
60

REFERENCES

1. Nurgali, K., Jagoe, R. T., Abalo, R., eds. (2018). Adverse Effects of Cancer Chemotherapy: Anything New to Improve Tolerance and Reduce Sequelae? *Lausanne: Frontiers Media* [DOI: 10.3389/978-2-88945-482-2].
2. Sharma R, Tobin P, Clarke SJ. Management of chemotherapy-induced nausea, vomiting, oral mucositis, and diarrhoea. *Lancet Oncol* 2005; 6: 93-102 [DOI: 10.1016/S1470-2045(05)01735-3].
3. Navari RM. Management of chemotherapy-induced nausea and vomiting: focus on newer agents and new uses for older agents. *Drugs* 2013; 73: 249-262 [DOI: 10.1007/s40265-013-0019-1].
4. Rapoport BL. Delayed Chemotherapy-Induced Nausea and Vomiting: Pathogenesis, Incidence, and Current Management. *Front. Pharmacol* 2017; 8:19. [DOI: 10.3389/fphar.2017.00019].
5. McQuade RM, Stojanovska V, Abalo R, Bornstein JC, Nurgali K. Front. Chemotherapy-Induced Constipation and Diarrhea: Pathophysiology, Current and Emerging Treatments. *Front Pharmacol* 2016;7:414 [DOI: 10.3389/fphar.2016.00414].
6. Liu YL, Malik N, Sanger GJ, Friedman MI, Andrews PL. Pica—a model of nausea? Species differences in response to cisplatin. *Physiol Behav* 2005; 85: 271-277 [DOI:10.1016/j.physbeh.2005.04.009].
7. Rudd JA, Ngan MP, Lu Z, Higgins GA, Giuliano C, Lovati E, Pietra C.. Profile of Antiemetic Activity of Netupitant Alone or in Combination with Palonosetron and Dexamethasone in Ferrets and *Suncus murinus*

- 1
2
3 (House Musk Shrew) *Front Pharmacol* 2016. 7:263. [DOI:
4 10.3389/fphar.2016.00263].
5
6
7 8. Navari RM. 5-HT₃ receptors as important mediators of nausea and
8 vomiting due to chemotherapy. *Biochim Biophys Acta* 2015; 1848: 2738-
9 2746 [DOI: 10.1016/j.bbame.2015.03.020].
10
11
12
13 9. Fukui H, Yamamoto M, Sasaki S, Sato S. Involvement of 5-HT₃
14 receptors and vagal afferents in copper sulfate- and cisplatin-induced
15 emesis in monkeys. *Eur J Pharmacol* 1993; 249: 13-18.
16
17
18
19
20 10. Minami M, Endo T, Hirafuji M, Hamaue N, Liu Y, Hiroshige T, Nemoto M,
21 Saito H, Yoshioka M. Pharmacological aspects of anticancer drug-
22 induced emesis with emphasis on serotonin release and vagal nerve
23 activity. *Pharmacol Ther* 2003; 99: 149-165 [DOI: 10.1016/S0163-
24 7258(03)00057-3].
25
26
27
28
29
30
31 11. de Jonghe BC, Horn CC. Chemotherapy-induced pica and anorexia are
32 reduced by common hepatic branch vagotomy in the rat. *Am J Physiol*
33 *Regul Integr Comp Physiol* 2008; 294: 756-765 [DOI:
34 10.1152/ajpregu.00820.2007].
35
36
37
38
39
40 12. Rojas C, Raje M, Tsukamoto T, Slusher BS. Molecular mechanisms of 5-
41 HT₃ and NK(1) receptor antagonists in prevention of emesis. *Eur J*
42 *Pharmacol* 2014; 722: 26-37 [DOI: 10.1016/j.ejphar.2013.08.049].
43
44
45
46 13. Takeda N, Hasegawa S, Morita M, Matsunaga T. Pica in rats is
47 analogous to emesis: an animal model in emesis research. *Pharmacol*
48 *Biochem Behav* 1993; 45: 817-21.
49
50
51
52
53
54
55
56
57
58
59
60

- 1
2
3 14. Yamamoto K, Nakai M, Nohara K, Yamatodani A. The anti-cancer drug-
4 induced pica in rats is related to their clinical emetogenic potential. *Eur J*
5 *Pharmacol* 2007; 554: 34-39 [DOI: 10.1016/j.ejphar.2006.09.058].
6
7
8
9 15. Cabezos PA, Vera G, Castillo M, Fernández-Pujol R, Martín MI, Abalo R.
10 Radiological study of gastrointestinal motor activity after acute cisplatin in
11 the rat. Temporal relationship with pica. *Auton Neurosci* 2008;141: 54-65.
12 [DOI: 10.1016/j.autneu.2008.05.004].
13
14
15
16
17 16. Vera G, Chiarlone A, Martín MI, Abalo R. Altered feeding behaviour
18 induced by long-term cisplatin in rats. *Auton Neurosci* 2006;126-127:81-
19 92.
20
21
22
23
24 17. Vera G, Chiarlone A, Cabezos PA, Pascual D, Martín MI, Abalo R. WIN
25 55,212-2 prevents mechanical allodynia but not alterations in feeding
26 behaviour induced by chronic cisplatin in the rat. *Life Sci* 2007;
27 19;81(6):468-79.
28
29
30
31
32 18. Cabezos PA, Vera G, Martín-Fontelles MI, Fernández-Pujol R, Abalo R.
33 Cisplatin-induced gastrointestinal dysmotility is aggravated after chronic
34 administration in the rat. Comparison with pica. *Neurogastroenterol Motil*
35 2010; 22: 797-805 [DOI: 10.1111/j.1365-2982.2010.01483.x].
36
37
38
39
40 19. Viana-Cardoso KV, da Silva MT, Júnior RC, Peixoto Junior AA, Pinho
41 LG, Santos AA, Ribeiro RA, Rola FH, Gondim Fde A. Repeated cisplatin
42 treatments inhibit gastrointestinal motility and induces baroreflex
43 changes and mechanical hyperalgesia in rats. *Cancer Invest* 2011; 29:
44 494-500 [DOI: 10.3109/07357907.2011.597814].
45
46
47
48
49 20. Malik NM, Liu YL, Cole N, Sanger GJ, Andrews PL. Differential effects of
50 dexamethasone, ondansetron and a tachykinin NK1 receptor antagonist
51
52
53
54
55
56
57
58
59
60

- 1
2
3 (GR205171) on cisplatin-induced changes in behaviour, food intake, pica
4 and gastric function in rats. *Eur J Pharmacol* 2007; 555: 164-173 [DOI:
5 10.1016/j.ejphar.2006.10.043].
6
7
8
9 21. Vera G, López-Pérez AE, Martínez-Villaluenga M, Cabezos PA, Abalo R.
10 X-ray analysis of the effect of the 5-HT₃ receptor antagonist granisetron
11 on gastrointestinal motility in rats repeatedly treated with the antitumoral
12 drug cisplatin. *Exp Brain Res* 2014;232: 2601-2612 [DOI:
13 10.1007/s00221-014-3954-5]
14
15
16 22. Shi J. Evaluating the various phases of cisplatin-induced emesis in rats.
17 *Oncol Lett.* 2014;8:2017-2022 [DOI:10.3892/ol.2014.2506].
18
19
20 23. Batra VR, Schrott LM. Acute oxycodone induces the pro-emetic pica
21 response in rats. *J Pharmacol Exp Ther* 2011; 339: 738-745 [DOI:
22 10.1124/jpet.111.183343].
23
24
25 24. Kerckhove N, Collin A, Condé S, Chaletex C, Pezet D, Balayssac D.
26 Long-Term Effects, Pathophysiological Mechanisms, and Risk Factors of
27 Chemotherapy-Induced Peripheral Neuropathies: A Comprehensive
28 Literature Review. *Front. Pharmacol* 2017;24;8:86. [DOI:
29 10.3389/fphar.2017.00086].
30
31
32 25. Bielefeldt K, Christianson JA, Davis BM. Basic and clinical aspects of
33 visceral sensation: transmission in the CNS. *Neurogastroenterol Motil*
34 2005;17:488-99.
35
36
37 26. Cerveró F. Visceral hyperalgesia revisited. *Lancet.* 2000;356:1127-8.
38
39
40 27. Cinausero M, Aprile G, Ermacora P, Basile D, Vitale MG, Fanotto V,
41 Parisi G, Calvetti L, Sonis ST. New Frontiers in the Pathobiology and
42
43
44
45
46
47
48
49
50
51
52
53
54
55
56
57
58
59
60

- 1
2
3 Treatment of Cancer Regimen-Related Mucosal Injury. *Front. Pharmacol*
4 2017; 8: 354. [DOI: 10.3389/fphar.2017.00354].
5
6
7 28. Vera G, Castillo M, Cabezos PA, Chiarlone A, Martín MI, Gori A,
8 Pasquinelli G, Barbara G, Stanghellini V, Corinaldesi R, De Giorgio R,
9 Abalo R. Enteric neuropathy evoked by repeated cisplatin in the rat.
10 *Neurogastroenterol Motil* 2011; 23(4): 370-8, e162-3. [DOI:
11 10.1111/j.1365-2982.2011.01674.x].
12
13
14 29. Uranga JA, García-Martínez JM, García-Jiménez C, Vera G, Martín-
15 Fontelles MI, Abalo R. Alterations in the small intestinal Wall and motile
16 function after repeated cisplatin in the rat. *Neurogastroenterol Motil* 2017;
17 29(7). [DOI: 10.1111/nmo.13047].
18
19
20 30. Wafai L, Taher M, Jovanovska V, Bornstein JC, Dass CR, Nurgali K.
21 Effects of oxaliplatin on mouse myenteric neurons and colonic motility.
22 *Front Neurosci* 2013; 7: 30. [DOI: 10.3389/fnins.2013.00030].
23
24
25 31. McQuade R, Stojanovska V, Stavely R, Timpani C, Peterson AC, Abalo
26 R, Bornstein JC, Rybalka E, Nurgali K. Oxaliplatin-induced enteric
27 neuronal loss and gastrointestinal dysfunction is prevented by co-
28 treatment with BGP-15. *Br J Pharmacol* 2018; 175(4):656-677.
29
30
31 32. Rossato MF, Rigo FK, Oliveira SM, Guerra GP, Silva CR, Cunha TM,
32 Gomez MV, Ferreira J, Trevisan G. Participation of transient receptor
33 potential vanilloid 1 in paclitaxel-induced acute visceral and peripheral
34 nociception in rodents. *Eur J Pharmacol* 2018;828:42-51. [DOI:
35 10.1016/j.ejphar.2018.03.033].
36
37
38
39
40
41
42
43
44
45
46
47
48
49
50
51
52
53
54
55
56
57
58
59
60

- 1
2
3 33. Galeazzi F, Blennerhassett PA, Qiu B, O'Byrne PM, Collins SM.
4 Cigarette smoke aggravates experimental colitis in rats.
5 *Gastroenterology* 1999; 117: 877–883.
6
7
8
9 34. Saccani F, Anselmi L, Jaramillo I, Bertoni S, Barocelli E, Sternini C.
10 Protective role of μ opioid receptor activation in intestinal inflammation
11 induced by mesenteric ischemia/reperfusion in mice. *J Neurosci Res*
12 2012;90: 2146-2153 [DOI: 10.1002/jnr.23108].
13
14
15
16
17 35. Yamamoto K, Asano K, Tasaka A, Ogura Y, Kim S, Ito Y, Yamatodani A.
18 Involvement of substance P in the development of cisplatin-induced
19 acute and delayed pica in rats. *Br J Pharmacol* 2014;171:2888-2899
20 [DOI: 10.1111/bph.12629].
21
22
23
24
25
26 36. Herrstedt J, Roila F, Warr D, Celio L, Navari RM, Hesketh PJ, Chan A,
27 Apro MS. 2016 Updated MASCC/ESMO Consensus
28 Recommendations: Prevention of Nausea and Vomiting Following High
29 Emetic Risk Chemotherapy. *Support Care Cancer* 2017;25:277-288.
30 [DOI 10.1007/s00520-016-3313-0].
31
32
33
34
35
36
37 37. Parker LA, Rana SA, Limebeer CL. Conditioned nausea in rats:
38 assessment by conditioned disgust reactions, rather than conditioned
39 taste avoidance. *Can J Exp Psychol* 2008;62:198–209.
40
41
42
43
44 38. Parker LA. Conditioned flavor avoidance and conditioned gaping: rat
45 models of conditioned nausea. *Eur J Pharmacol* 2014;722:122-33. [DOI:
46 10.1016/j.ejphar.2013.09.070].
47
48
49
50 39. Yamamoto K, Tatsutani S, Ishida T. Detection of Nausea-Like Response
51 in Rats by Monitoring Facial Expression. *Front. Pharmacol* 2017; 7:534.
52 [DOI: 10.3389/fphar.2016.00534].
53
54
55
56
57
58
59
60

- 1
2
3 40. Yamamoto K, Asano K, Matsukawa N, Imaizumi M, Yamatodani A. Time-
4 course analysis of pica in rats using an automatic feeding monitoring
5 system. *J Pharmacol Toxicol Methods* 2011;63:30-4. [DOI:
6 10.1016/j.vascn.2010.04.011].
7
8
9
10
11 41. Mitchell D, Laycock JD, Stephens WF. Am J Clin Nutr. Motion sickness-
12 induced pica in the rat. *Am J Clin Nutr* 1977;30:147-50.
13
14
15 42. Yamamoto K, Takeda N, Yamatodani A. Establishment of an animal
16 model for radiation-induced vomiting in rats using pica. *J Radiat Res*
17 2002;43:135-41.
18
19
20
21
22 43. Ando K, Takagi K, Tsubone H. Enhanced gastric retention of solid resin
23 beads as a marker for emetic potential of agents in rats. *J Toxicol Sci*
24 2012;37: 549-553 [DOI: 10.2131/jts.37.549].
25
26
27
28
29 44. Ando H, Mochiki E, Ohno T, Yanai M, Toyomasu Y, Ogata K, Tabe Y,
30 Aihara R, Nakabayashi T, Asao T, Kuwano H. Mechanism of
31 gastrointestinal abnormal motor activity induced by cisplatin in conscious
32 dogs. *World J Gastroenterol* 2014;20:15691-15702 [DOI:
33 10.3748/wjg.v20.i42.15691]
34
35
36
37
38
39 45. Horn CC. Measuring the nausea-to-emesis continuum in non-human
40 animals: refocusing on gastrointestinal vagal signaling. *Exp Brain Res*
41 2014; 232: 2471-2481 [DOI: 10.1007/s00221-014-3985-y]
42
43
44
45
46 46. Roos IA, Fairlie DP, Whitehouse MW. A peculiar toxicity manifested by
47 platinum(II)amines in rats: gastric distension after intraperitoneal
48 administration. *MWChem Biol Interact* 1981;35:111-117
49
50
51
52 [DOI:10.1016/0009-2797(81)90066-1]
53
54
55
56
57
58
59
60

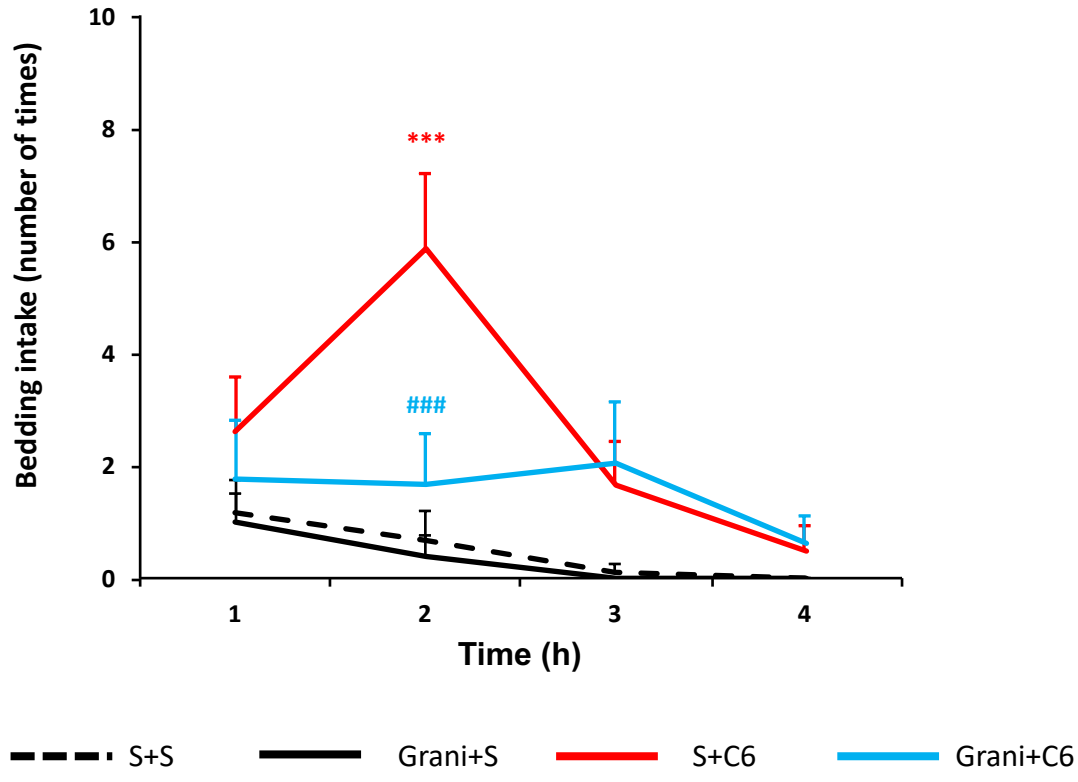
- 1
2
3 47. Johnston KD, Lu Z, Rudd JA. Looking beyond 5-HT(3) receptors: a
4 review of the wider role of serotonin in the pharmacology of nausea and
5 vomiting. *Eur J Pharmacol* 2014;722:13-25 [DOI:
6 10.1016/j.ejphar.2013.10.014]
7
8
9
10
11 48. Gullikson GW, Loeffler RF, Viriña MA. Relationship of serotonin-3
12 receptor antagonist activity to gastric emptying and motor-stimulating
13 actions of prokinetic drugs in dogs. *J Pharmacol Exp Ther* 1991; 258:
14 103-110.
15
16
17
18
19
20 49. Hoffmann La Roche Ltd. Product monograph, PrKYTRIL®. Available
21 from
22 URL: [http://www.rochecanada.com/content/dam/roche_canada/en_CA/do](http://www.rochecanada.com/content/dam/roche_canada/en_CA/documents/Research/ClinicalTrialsForms/Products/ConsumerInformation/MonographsandPublicAdvisories/Kytril/Kytril_PM_E.pdf)
23 cuments/Research/ClinicalTrialsForms/Products/ConsumerInformation/M
24 onographsandPublicAdvisories/Kytril/Kytril_PM_E.pdf
25
26
27
28
29
30
31 50. Huang CT, Chen CF, Tsai TH. Pharmacokinetics of granisetron in rat
32 blood and brain by microdialysis. *Life Sci* 1999;64:1921-1231
33 [DOI:10.1016/S0024-3205(99)00143-5]
34
35
36
37 51. Obara Y, Machida T, Takano Y, Shiga S, Suzuki A, Hamaue N, Iizuka K,
38 Hirafuji M. Cisplatin increases the number of enterochromaffin cells
39 containing substance P in rat intestine. *Naunyn Schmiedebergs Arch*
40 *Pharmacol* 2018;15. [DOI: 10.1007/s00210-018-1493-5].
41
42
43
44
45
46 52. Hesketh PJ, Bohlke K, Lyman GH, Basch E, Chesney M, Clark-Snow
47 RA, Danso MA, Jordan K, Somerfield MR, Kris MG. Antiemetics:
48 American Society of Clinical Oncology Focused Guideline Update.
49 American Society of Clinical Oncology. *J Clin Oncol* 2016;34:381-386
50 [DOI: 10.1200/JCO.2015.64.3635].
51
52
53
54
55
56
57
58
59
60

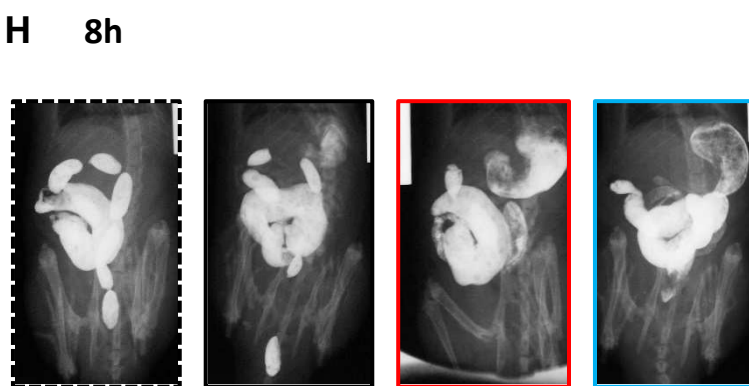
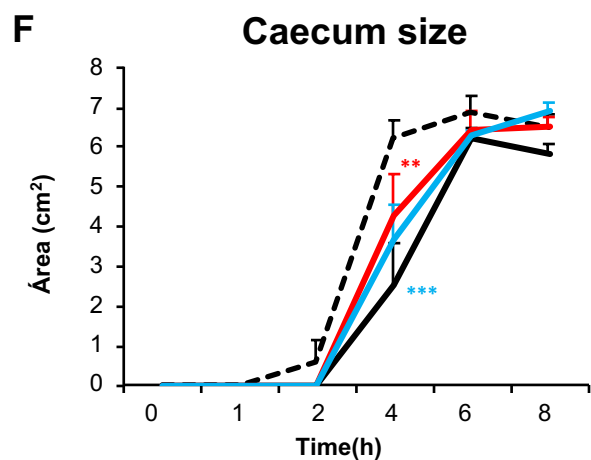
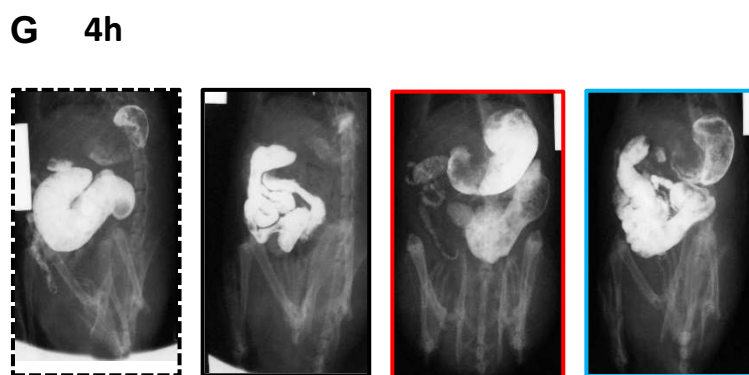
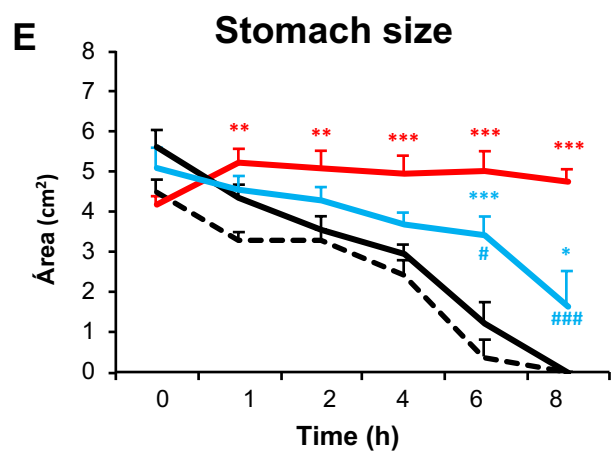
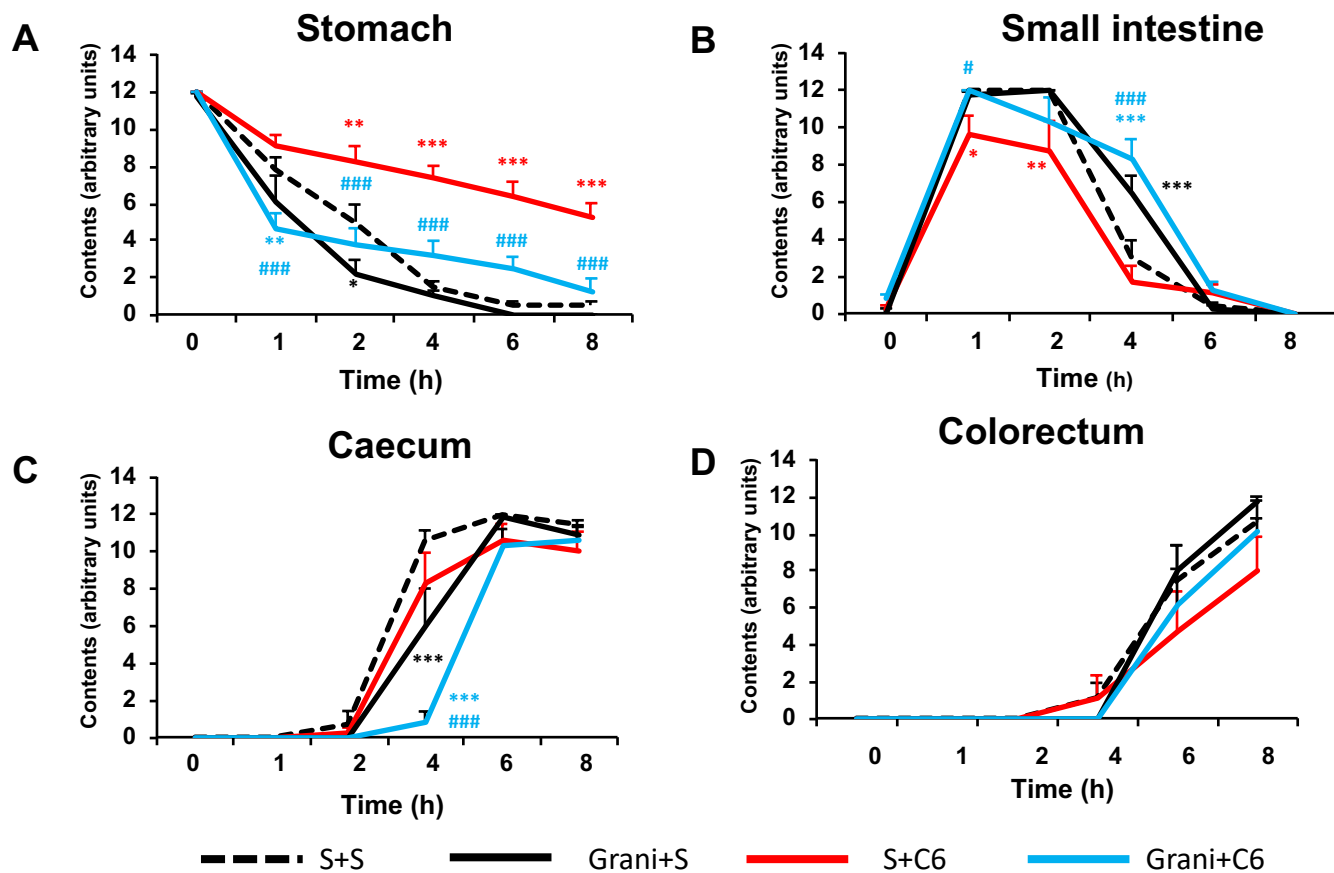
- 1
2
3 53. Gilmore J, D'Amato S, Griffith N, Schwartzberg L. Recent advances in
4 antiemetics: new formulations of 5HT₃-receptor antagonists. *Cancer*
5 *Manag Res*. 2018 Jul 3;10:1827-1857. doi: 10.2147/CMAR.S166912.
6
7
8
9 54. de Wit R, van den Berg H, Burghouts J, Nortier J, Slee P, Rodenburg C,
10 Keizer J, Fonteyn M, Verweij J, Wils J. Initial high anti-emetic efficacy of
11 granisetron with dexamethasone is not maintained over repeated cycles.
12 *Br J Cancer* 1998;77:1487-1491.
13
14
15
16
17 55. Margolis KG, Stevanovic K, Li Z, Yang QM, Oravec T, Zambrowicz B,
18 Jhaveri KG, Diacou A, Gershon MD. Pharmacological reduction of
19 mucosal but not neuronal serotonin opposes inflammation in mouse
20 intestine. *Gut* 2014;63:928-937 [DOI: 10.1136/gutjnl-2013-304901].
21
22
23
24
25
26 56. González VM, Fuertes MA, Alonso C, Pérez JM. Is cisplatin-induced cell
27 death always produced by apoptosis? *Mol Pharmacol* 2001;59:657-663.
28 [DOI: 10.1124/mol.59.4.657]
29
30
31
32 57. Ramos JM, Arrebola F, Fernández-Cervilla FJ, Crespo V, Fernández-
33 Segura E. Electron probe X-ray microanalysis of cisplatin-induced cell
34 death in rat pheochromocytoma PC12 cells. *Histol Histopathol*
35 2011;26:333-342. [DOI: 10.14670/HH-26.333].
36
37
38
39
40
41 58. Feng CC, Yan XJ, Chen X, Wang EM, Liu Q, Zhang LY, Chen J, Fang
42 JY, Chen SL. Vagal anandamide signaling via cannabinoid receptor 1
43 contributes to luminal 5-HT modulation of visceral nociception in rats.
44 *Pain* 2014;155(8):1591-604. [DOI: 10.1016/j.pain.2014.05.005].
45
46
47
48
49
50 59. Uranga JA, Vera G, Abalo R. Cannabinoid pharmacology and therapy in
51 gut disorders. *Biochem Pharmacol* 2018; pii: S0006-2952(18)30318-6.
52 [DOI: 10.1016/j.bcp.2018.07.048].
53
54
55
56
57
58
59
60

- 1
2
3 60. Vera G, López-Pérez AE, Uranga JA, Girón R, Martín-Fontelles MI,
4 Abalo R. Involvement of Cannabinoid Signaling in Vincristine-Induced
5 Gastrointestinal Dysmotility in the Rat. *Front Pharmacol* 2017;8:37. [DOI:
6 10.3389/fphar.2017.00037].
7
8
9
10
11 61. Pantelev SS, Martseva AA, Lyubashina OA. The inhibitory effect of
12 granisetron on ventrolateral medulla neuron responses to colorectal
13 distension in rats. *Eur J Pharmacol* 2015;749:49-55. [DOI:
14 10.1016/j.ejphar.2015.01.002].
15
16
17
18
19
20 62. Zhang L, Song J, Hou X. Mast Cells and Irritable Bowel Syndrome: From
21 the Bench to the Bedside. *J Neurogastroenterol Motil* 2016;22:181-92.
22 [DOI: 10.5056/jnm15137].
23
24
25
26
27 63. Chen L, Ilham SJ, Feng B. Pharmacological Approach for Managing Pain
28 in Irritable Bowel Syndrome: A Review Article. *Anesth Pain Med*
29 2017;7:e42747. [DOI: 10.5812/aapm.42747].
30
31
32
33
34
35
36
37
38
39
40
41
42
43
44
45
46
47
48
49
50
51
52
53
54
55
56
57
58
59
60

1
2
3
4
5
6
7
8
9
10
11
12
13
14
15
16
17
18
19
20
21
22
23
24
25
26
27
28
29
30
31
32
33
34
35
36
37
38
39
40
41
42
43
44
45
46
47
48
49
50
51
52
53
54
55
56
57
58
59
60

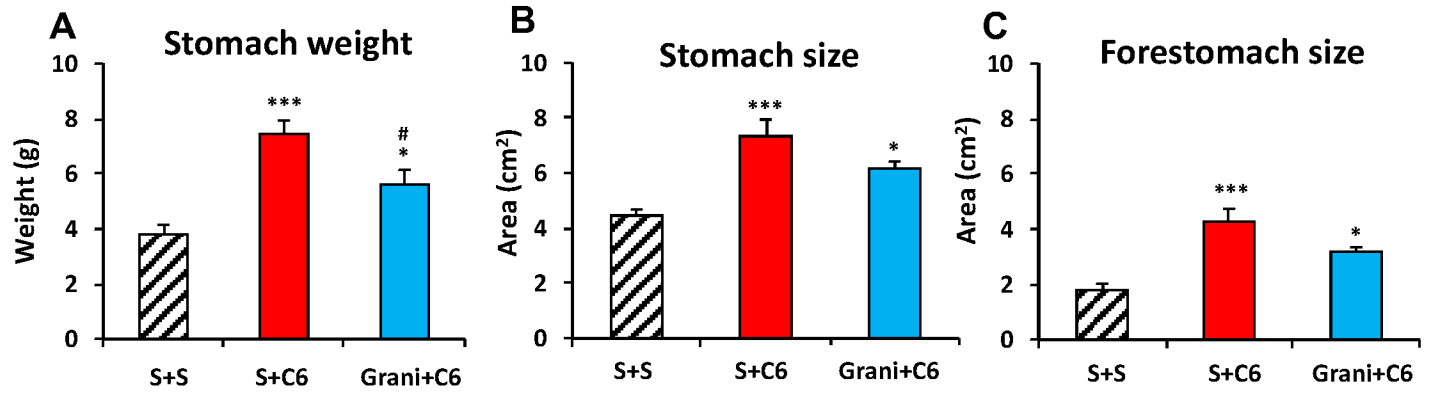
Bedding intake



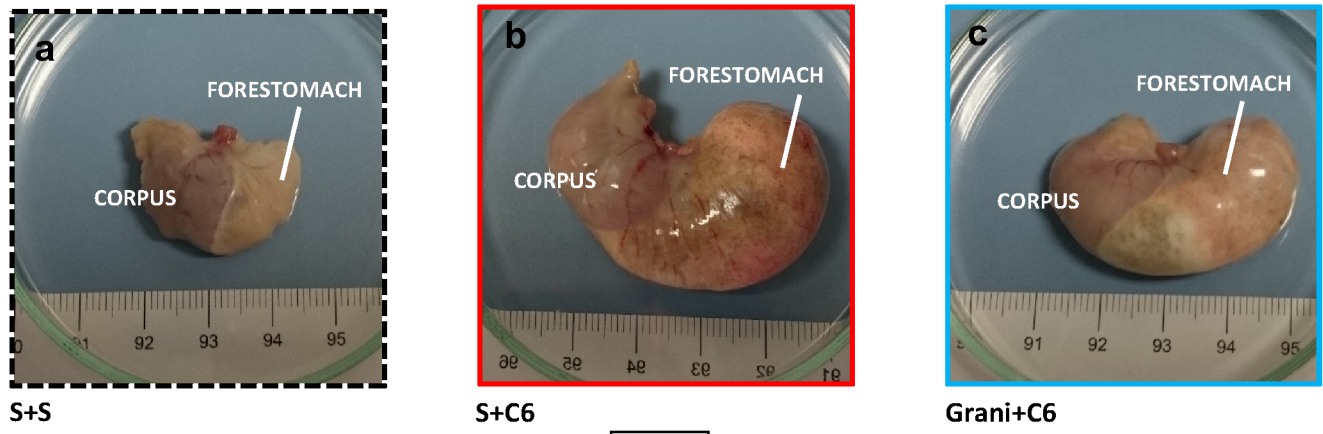


3 cm

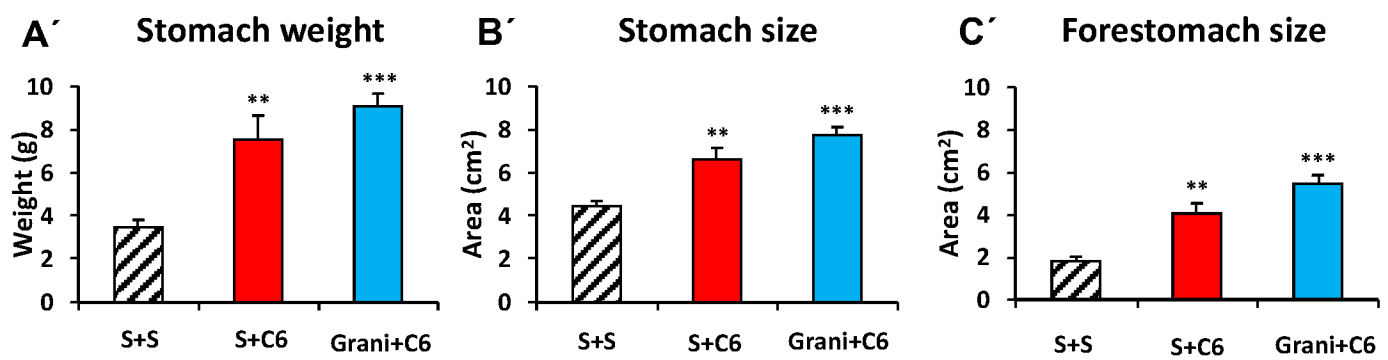
4h



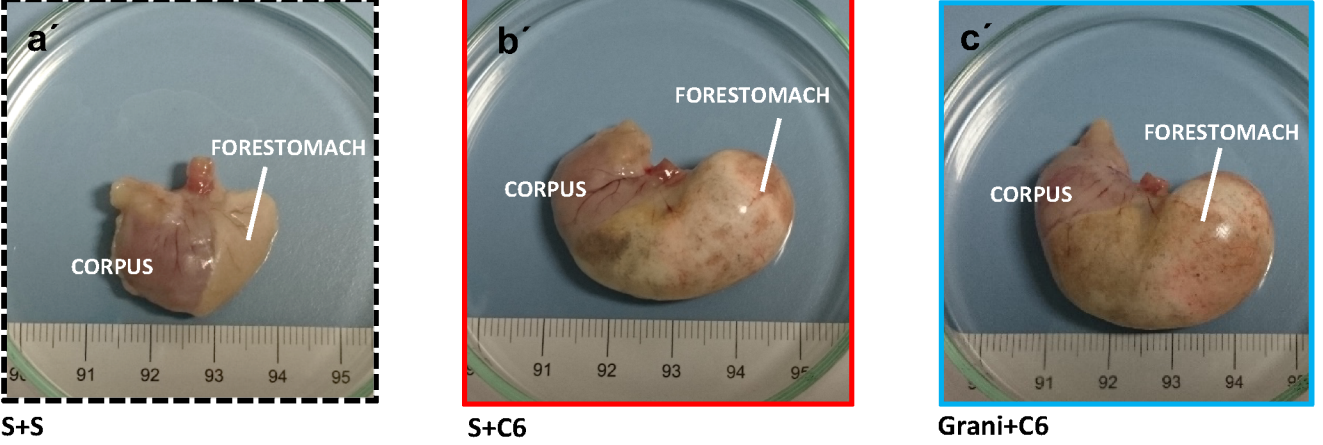
D

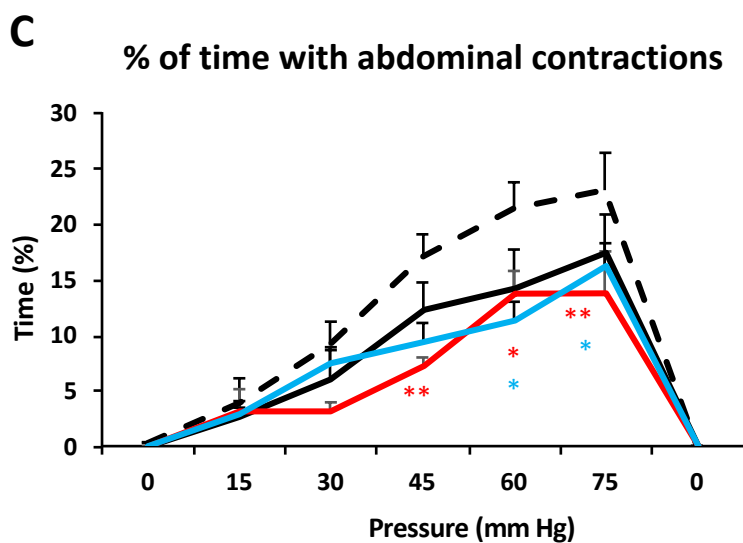
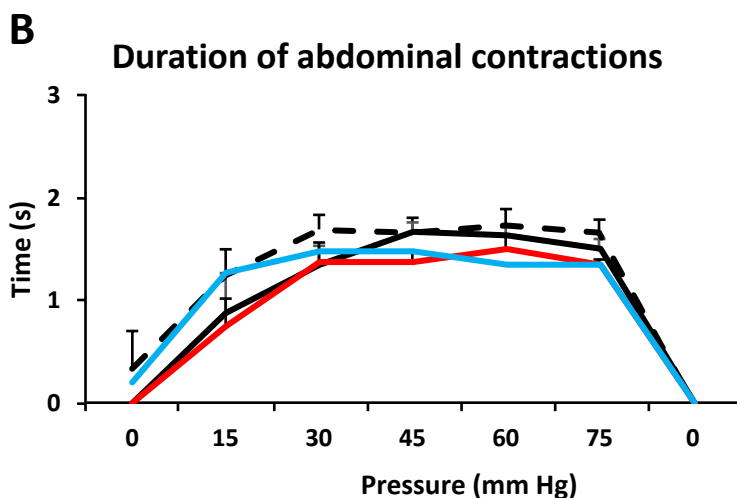
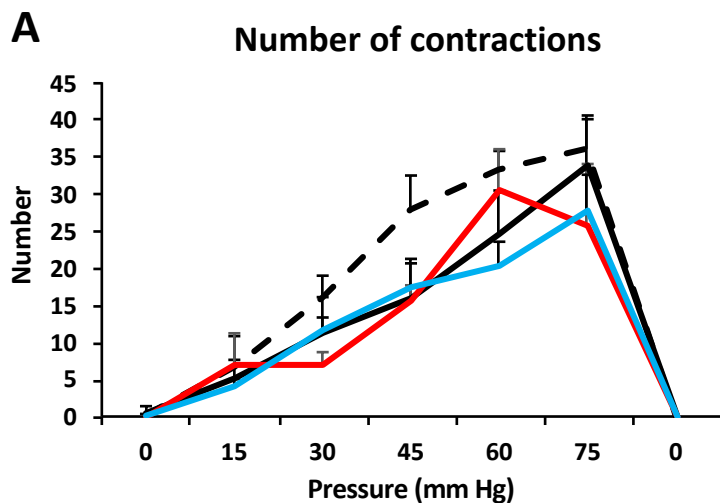


30h

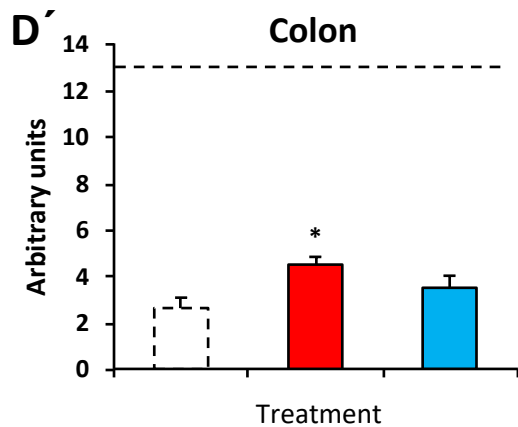
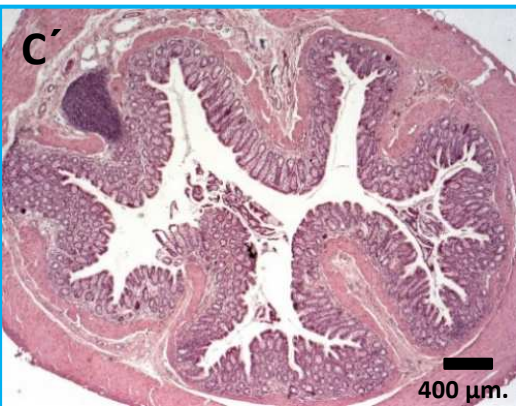
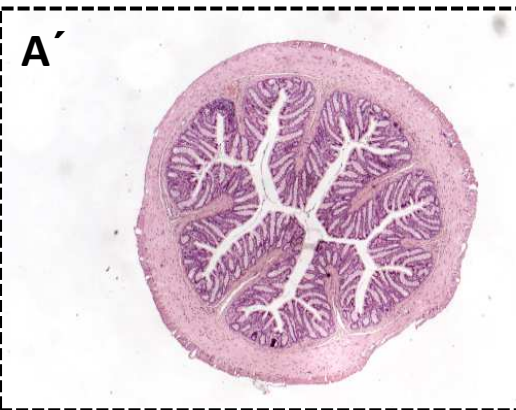
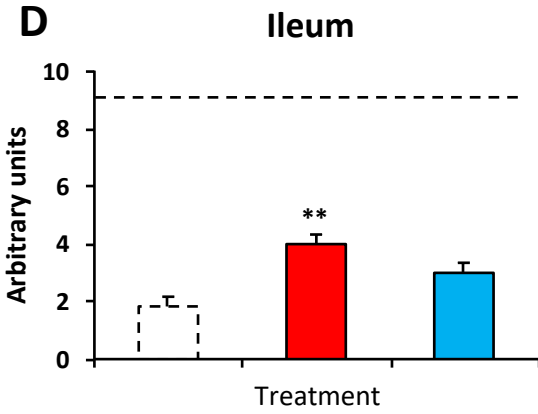
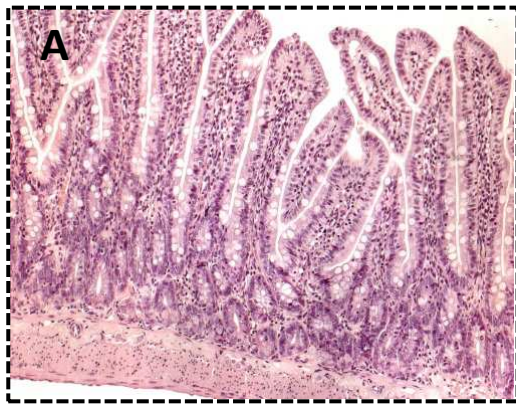


D'





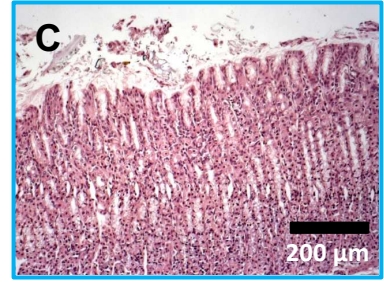
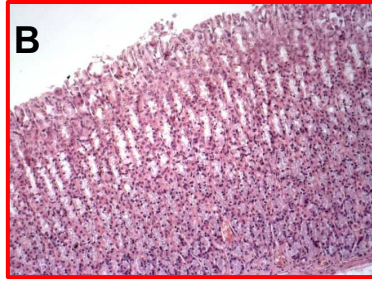
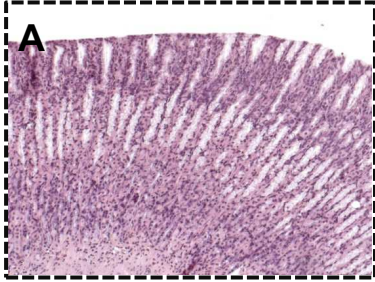
S+S
 Grani+S
 S+C6
 Grani+C6



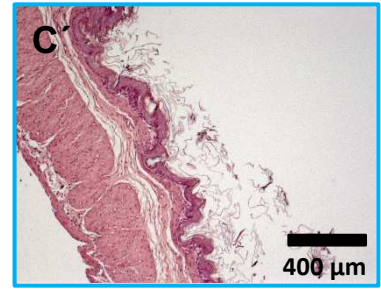
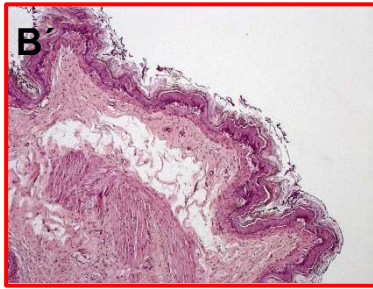
57
58
59
60

S+S
 S+C6
 Grani+C6

CORPUS (30 h)



FORESTOMACH (30 h)

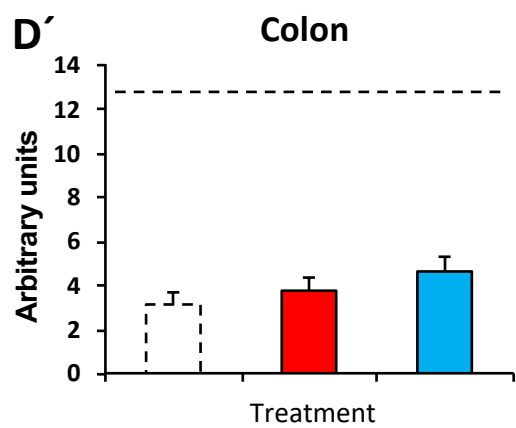
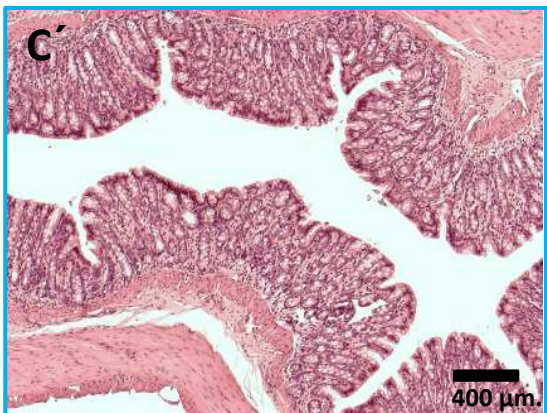
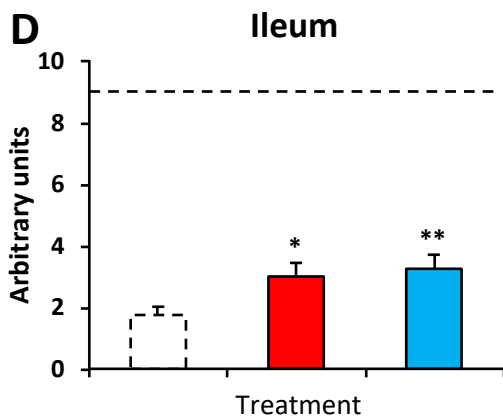


S+S

S+C6

Grani+C6

1
2
3
4
5
6
7
8
9
10
11
12
13
14
15
16
17
18
19
20
21
22
23
24
25
26
27
28
29
30
31
32
33
34
35
36
37
38
39
40
41
42
43
44
45
46
47
48
49
50
51
52
53
54
55
56
57
58
59
60



□ S+S ■ S+C6 ■ Grani+C6